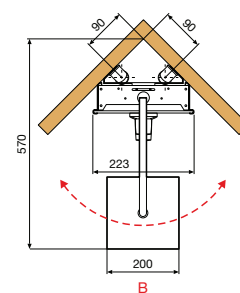
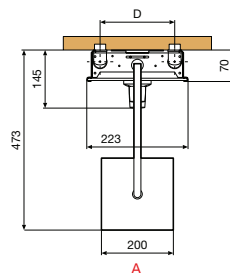
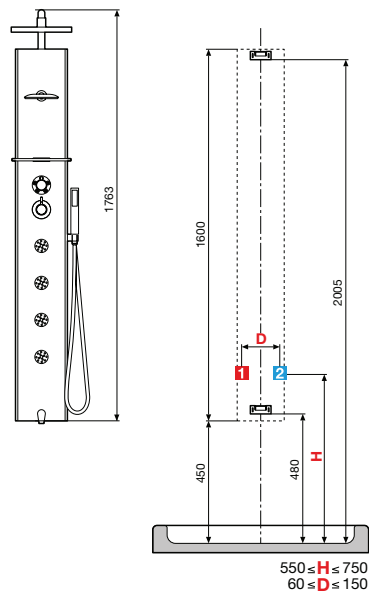


CASCATA 2

COLUMNA DE HIDROMASAJE CON PERFILES LATERALES DE ALUMINIO Y ACABADO ACRÍLICO / INSTALACIÓN EN ÁNGULO O A PARED
EQUIPPED HYDRO MASSAGE PANEL / FOR WALL FITTING, AVAILABLE ALSO WITH BATHTUB FILLER



Ducha fija de 200x200 mm
Shower head dimensions 200x200 mm



| Mezclador Mixer | Medidas Dimensions (cm) | Código Code | Selección de color Select the colour |
|-----------------|-------------------------|-------------|--------------------------------------|
|-----------------|-------------------------|-------------|--------------------------------------|



| | | | A | H | W |
|--|--|--|---|---|---|
|--|--|--|---|---|---|

Blanco White Negro Black Espejo Mirror

PARA DUCHA / FOR ENCLOSURE

| | | | | | |
|---------------------------|------------|----------|--|--|--|
| MONOMANDO MANUAL | 22,3 x 176 | CASC2VM- | | | |
| TERMOSTÁTICO THERMOSTATIC | 22,3 x 176 | CASC2VT- | | | |

PARA BAÑERA / FOR BATH

| | | | | | |
|---------------------------|------------|-----------|--|--|--|
| MONOMANDO MANUAL | 22,3 x 176 | CASC2VME- | | | |
| TERMOSTÁTICO THERMOSTATIC | 22,3 x 176 | CASC2VTE- | | | |

● Entrega en un plazo máximo de 7 días
Delivery within 7 business days

1 2 Tomas para grifería / Water connections for wall mounted fittings

1 CARACTERÍSTICAS HIDRÁULICAS HYDRAULIC CHARACTERISTIC

- Presión requerida 2+5 bar
- Optimum dynamic pressure 2+5 bar
- Agua caliente 1/2"
- 1/2" hot water connection
- Agua fría 1/2"
- Cold water connection 1/2"

Construcción del código: Código + Selección de color = Código completo del producto
Construction of the code: Code + Select the colour = Final product code